



DOES MY TREE NEED PRUNING OR REMOVAL?

Your Guide to Knowing What Needs to Be Done to Keep Your Property Healthy.

It's a great rule of thumb to take a thorough look at your property every season. This helps to guarantee that your trees are healthy, which has a major impact on the rest of your property. If something doesn't look right with one of your trees, there's a big chance it may need professional maintenance. Whether that maintenance entails pruning or removal will depend on some key factors observable on your tree. We've outlined some of the major signs to look for in order to determine whether your tree needs professional attention. Trees have a major impact on the overall health and safety of your property, so if you feel as though something is wrong, trust your gut and call in the pros.

YOUR TREE NEEDS PRUNING IF...



It has several broken, bowed, or splintering branches.

As these branches weaken, they can become a serious danger to a passerby.



Certain branches or patches of the trunk appear to be dead or dying.

If you see this, call a pro right away to prevent the decay from spreading.



Your tree's growth is starting to get close to power lines.

If you notice this, be sure to call a professional right away - don't attempt to take care of it yourself.



Your tree is cracked, splintered, or carrying broken branches after a storm.

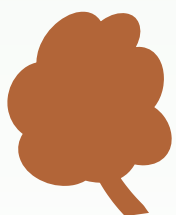
Cracks and splinters in your tree can be a perfect breeding ground for pests.



You can't see through your tree's branches.

Overly thick trees can prevent sunlight from reaching your lawn and pose a hazard in the face of a storm.

YOUR TREE NEEDS REMOVAL IF...



Your tree is leaning unusually.

Some trees grow to develop a slight lean, but if you notice a drastic or sudden lean, it can be a dangerous sign of decay.



Large or numerous cracks in your tree's trunk.

Cracking doesn't always mean removal is necessary, but it can. Call a professional to determine whether your trunk's cracks are undermining the structural support needed to keep your tree safely upright.



Damaged or decaying roots.

If your tree's roots look like they're dying, your tree is already in bad shape: this is a serious sign that its structure isn't sound and, unfortunately, it's time to come down.



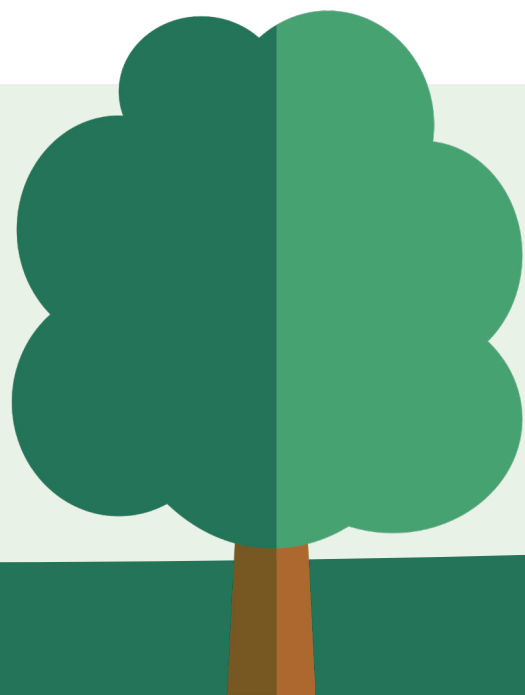
You don't see any bugs.

It may sound funny, but you want to see bugs on your tree. Their absence is a big indicator that your tree may be in decay.



Your tree is entangled in power lines.

If your tree's branches have completely grown into power lines, it may be time to remove it altogether. Make sure you work with a professional skilled in hazardous removal to do this.



KEEP YOUR TREES IN GREAT SHAPE.

The safety and overall well-being of your property start with your trees. If yours are exhibiting any of the signs above, or if you need any other tree maintenance services, don't hesitate to reach out to us.

www.tuckerenterprise.com
(727) 456-9071